

## Datasheet

### AIS-ADV0H0ML-001

AD Board with VGA/HDMI input, LVDS Output



### AIS-ADV0H0ML-001

#### Full HD LCD Scalar Controller Board

The AIS-ADV0H0ML-001 is a highly integrated TFT flat panel interface board that allows connecting analog 15Pin RGB and HDMI 1.3 source with TFT panels.

#### Key Features

- Up to 1920 x 1200 input / Up to 1920 x 1200 panels
- HDMI 1.3
- LVDS panel connection @60Hz
- I2C, RS232/485 commands & control
- On board backlight LED driver

#### Panel Connectivity

LVDS (Dual Channel)	up to 1920 x 1200 @60Hz
Panel Resolutions:	1920 x 1200, 1920 x 1080
Customization:	Support customize resolution i.e. 1280 x 320

#### Input

HDMI 1.3	60Hz up to 1920 x 1080
VGA	60Hz up to 1920 x 1200 75Hz up to 1400 x 1050 75Hz up to 1440 x 900

#### Reliability

Operating Temp:	-10~50°C
Storage Temp:	-20°C~60°C
Operating Humidity:	0% ~ 80% (non-condensing)
Storage Humidity:	0% ~ 90%
Warranty:	1 years

#### Features

Colors:	Up to 8 bits per color, i.e. 16.7 million colors
Function Display:	On Screen Display (OSD) menu
Function Control:	External buttons, Serial Port
Image Control:	Brightness, Contrast, Sharpness, Gamma, Color mode, Color temperature
Image Scaling:	Up / Down scaling to fit input to panel resolution
Other Features:	System information, Scaling to fill screen and fill to aspect ratio, OSD menu transparency, 6 axis adjustments, Dynamic Luma Curve (DLC).
Communication:	RS-232/RS485(Optional)
Input Power:	12VDC ±5%, 15W
Panel Power:	Supports 3.3V, 5V, 12V panels
Panel Signal:	Single/Dual channel LVDS
Backlight drivert:	Backlight on/off, PWM
Plug & Play:	DDC 1,2/b compatible
Status Indicator:	Dual color LED support
Audio:	Digital Audio line-out

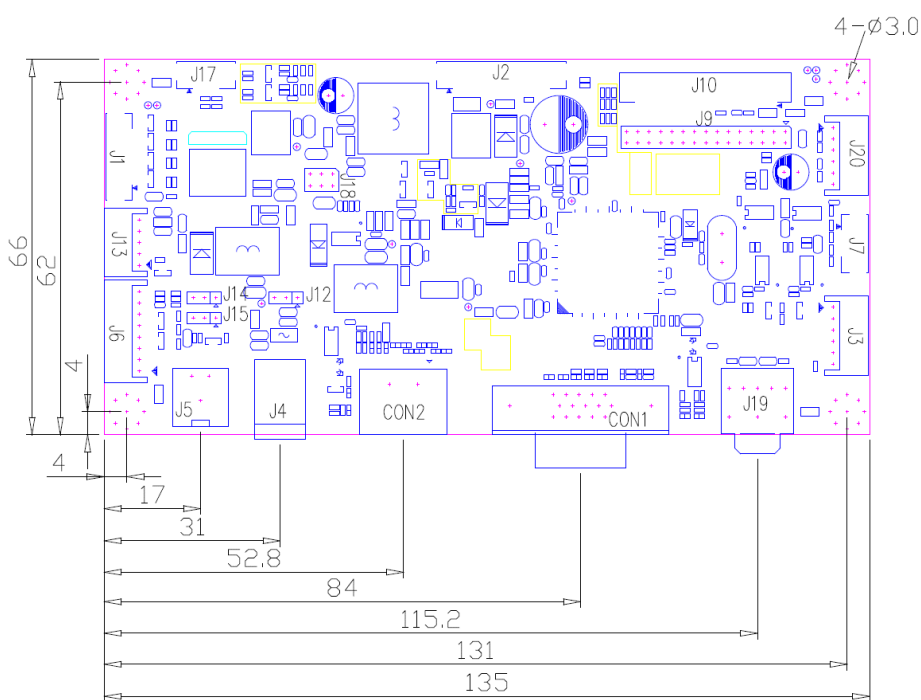
Custom Splash-Screen: The AIS-ADV0H0ML-001 supports custom splash- screen when powering on. This requires custom firmware.

Firmware Upgrade: The firmware version can be upgraded directly from a PC running Windows. Contact us for more detail

### AIS-ADV0H0ML-001

AD Board with VGA/HDMI input, LVDS Output

#### Mechanical Drawing



#### Connector Definitions

CON1	15PIN D-Sub VGA input
CON2	19PIN HDMI input
J1	8PIN/1.25mm BKL output
J2	14PIN/1.25mm KEY PAD
J3	Audio out
J4	DC Jack/2.5mm +12Vdc Input
J5	DC Jack/3mm pitch +24Vdc Input
J6	8PIN/2.0mm +12Vdc Input & BKL Control
J7	4PIN/1.25mm I2C control
J9	30PIN/2.0mm Pin header typeLVDS output
J10	50PIN/0.5mm FPC typeLVDS output
J12	3PIN/2.0mm Power Input Selection
J13	5PIN/2.0mm +5VSTB Input & Power Module On/Off Control
J14	3PIN/2.0mm PWM Level Control
J15	3PIN/2.0mm PWM Control
J18	3PIN/2.0mm Panel power select
J19	Audio in
J20	RS232 control

#### Ordering Options

<b>AIS-ADV0H0ML-001</b>	<b>P/N: AIS-ADV0H0ML-001</b>
OSD Key-pad 5-key	P/N: AIS-ADKP005-001
Cable Keypad 5-key 75mm	P/N: AIS-CAK0750-001
IR remote controller	
Backlight driving board	[subject to panel model]
Sensor kit	

#### Available Resource

- 2D (PDF)
- 3D (SLDPRT)
- Product approval sheet
- Custom engineering: Splash screen, OSD menu, coating, & more...

\*\*Available on request



The QR code above links to the product page on the website