



## Datasheet

### AIS-ADV0HML-215

AD Board with VGA/HDMI/DP input, LVDS Output



### AIS-ADV0HML-215

#### Full HD LCD Scalar Controller Board

The AIS-ADV0HML-215 is a highly integrated TFT flat panel interface board that allows connecting analog 15Pin RGB, HDMI and DP source with TFT panels.

#### Key Features

- Up to 1920 x 1080 input / Up to 1920 x 1080 panels
- HDMI 1.4
- DP 1.2a
- LVDS 8bits panel connection @60Hz
- On board backlight LED driver

#### Panel Connectivity

LVDS (Dual Channel)	up to 1920 x 1080 @60Hz
Panel Resolutions:	1920 x 1080
Customization:	Support customize resolution i.e. 1280 x 320

#### Input

HDMI 1.4	60Hz up to 1920 x 1080
DP 1.2a	60Hz up to 1920 x 1080
VGA	60Hz up to 1920 x 1200 75Hz up to 1400 x 1050 75Hz up to 1440 x 900

Operating Temp:	0~45°C
Storage Temp:	-10°C~60°C
Operating Humidity:	0% ~ 80% (non-condensing)
Storage Humidity:	0% ~ 90%
Warranty:	1 years

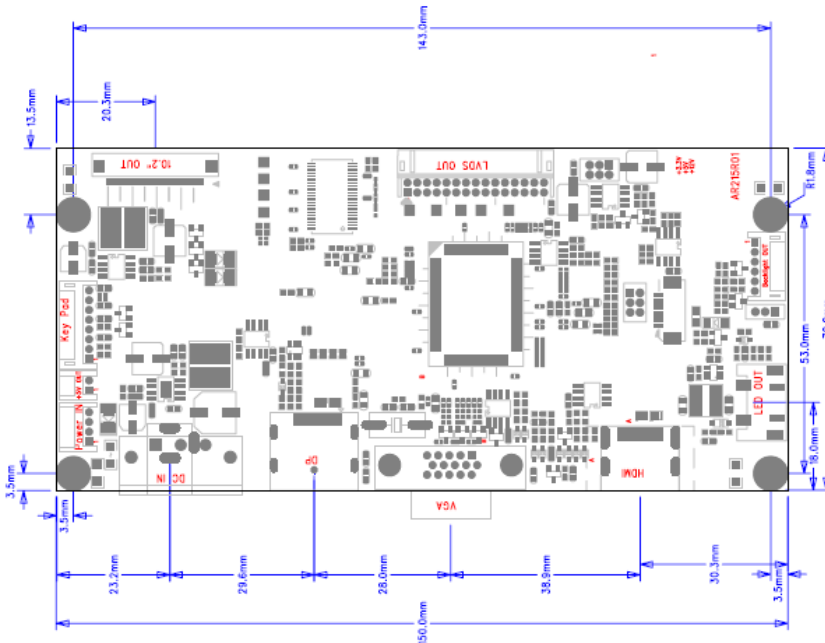
#### Features

Colors:	Up to 8 bits per color, i.e. 16.7 million colors
Function Display:	On Screen Display (OSD) menu
Function Control:	External buttons, Serial Port
Image Control:	Brightness, Contrast, Sharpness, Gamma, Color mode, Color temperature
Image Scaling:	Up / Down scaling to fit input to panel resolution
Other Features:	Dynamic system menu to fill the screen
Communication:	RS-232/RS485(Optional)
Input Power:	12VDC ±5%, 15W
Panel Power:	Supports 3.3V, 5V, 12V panels
Panel Signal:	RGB 6-bit Signal/Dual channel LVDS
Backlight Driver:	Backl RS-232/RS485(Optional)
Plug & Play:	DDC 1,2/b compatible
Status Indicator:	Dual color LED support
Audio:	N/A
Custom Splash-Screen:	The AIS-ADV0HML-215 supports custom splash-screen when powering on. This require custom firmware
Firmware Upgrade:	The firmware version can be upgraded directly from a PC running Windows. Contact us for more detail

### AIS-ADV0HML-215

AD Board with VGA/HDMI/DP input, LVDS Output

#### Mechanical Drawing



#### Connector Definitions

CON1	POWER Input.
CON2	INVERTER
CON3	OSD KEYPAD CONNECTOR
CON5	PANEL Output (LVDS)
CON12	D-Sub Input
CON13	DP Input
CON14	HDMI Input
CON16	POWER Input (int)
CON17	+5V Output
JP3	DC / PWM Select
JP5	Panel VCC Select
J6	PANEL Output (TTL)
J7	LED Backlight

#### Ordering Options

<b>AIS-ADV0HML-215</b>	<b>P/N: AIS-ADV0HML-215</b>
OSD Key-pad	P/N: AIS-ADKP004-001
OSD cable 20cm	P/N: AIS-CAK2001-001
IR remote controller	
Backlight driving board	[subject to panel model]
Sensor kit	

#### Available Resource

- 2D (PDF)
- 3D (SLDPRT)
- Product approval sheet
- Custom engineering: Splash screen, OSD menu, coating, & more...

\*\*Available on request



The QR code above links to the product page on the website