



Datasheet

AIS-ADVD00ML-001

AD Board with VGA/DVI input, LVDS Output



AIS-ADVD00ML-001

Full HD LCD Scalar Controller Board

The AIS-ADVD00ML-001 is a highly integrated TFT flat panel interface board that allows connecting analog 15Pin RGB and DVI 1.0 source with TFT panels.

Key Features

- Up to 1920 x 1200 input / Up to 1920 x 1200 panels
- DVI 1.0
- LVDS panel connection @60Hz
- I2C, RS232/485 commands & control
- On board backlight LED driver

Panel Connectivity

LVDS (Dual Channel)	up to 1920 x 1200 @60Hz
Panel Resolutions:	1920 x 1200, 1920 x 1080
Customization:	Support customize resolution i.e. 1280 x 320

Input

HDMI 1.3	60Hz up to 1920 x 1080
VGA	60Hz up to 1920 x 1200 75Hz up to 1400 x 1050 75Hz up to 1440 x 900

Reliability

Operating Temp:	-10~50°C
Storage Temp:	-20°C~60°C
Operating Humidity:	0% ~ 80% (non-condensing)
Storage Humidity:	0% ~ 90%
Warranty:	1 years

Features

Colors:	Up to 8 bits per color, i.e. 16.7 million colors
Function Display:	On Screen Display (OSD) menu
Function Control:	External buttons, Serial Port
Image Control:	Brightness, Contrast, Sharpness, Gamma, Color mode, Color temperature
Image Scaling:	Up / Down scaling to fit input to panel resolution
Other Features:	Dynamic system menu to fill the screen, Frame buffer for FRC image enhancement, Transparent OSD
Communication:	RS-232/RS485(Optional)
Input Power:	12VDC ±5%, 15W
Panel Power:	Supports 3.3V, 5V, 12V panels
Panel Signal:	Single/Dual channel LVDS
Backlight Driver:	Backlight on/off, PWM
Plug & Play:	DDC 1,2/b compatible
Status Indicator:	Dual color LED support
Audio:	N/A

Custom Splash-Screen: The AIS-ADV0HPML-001 supports custom splash- screen when powering on. This requires custom firmware.

Firmware Upgrade: The firmware version can be upgraded directly from a PC running Windows. Contact us for more detail



AIS Taiwan

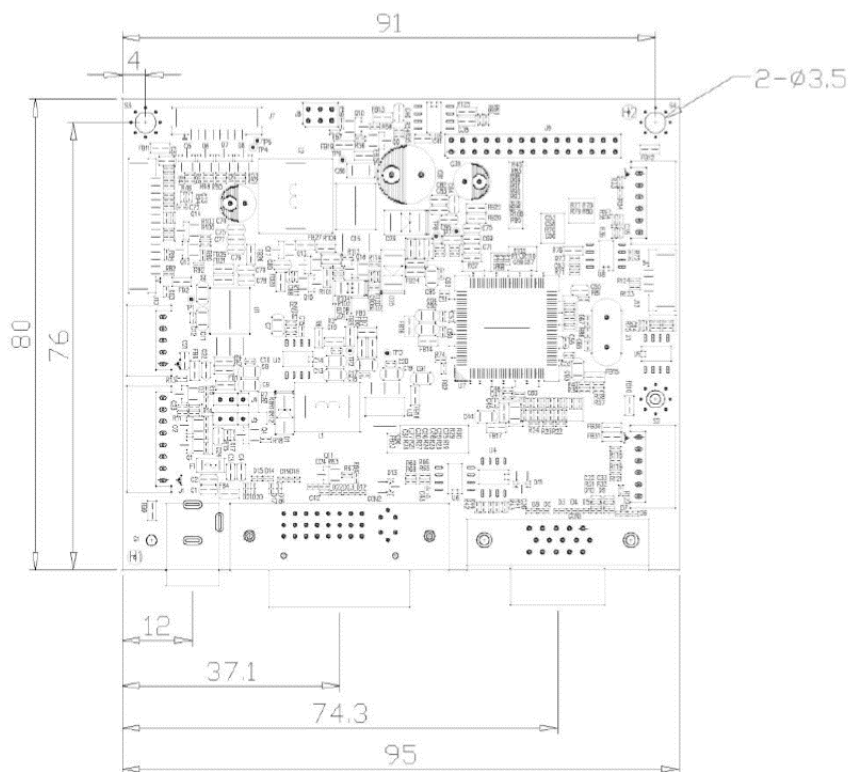
Touching the world through glass

Datasheet

AIS-ADVD00ML-001

AD Board with VGA/DVI input, LVDS Output

Mechanical Drawing



Connector Definitions

- J1 DC Jack/2.5mm +12Vdc Input
- J2 8PIN/2.0mm +12Vdc Input & BKL Control
- J3 5PIN/2.0mm +5VSTB Input & Power Module On/Off Control
- J4 3PIN/2.0mm PWM Level Control
- J5 3PIN/2.0mm PWM Control
- J6 6PIN/2.0mm RS232 & RS485 Control
- J7 8PIN Wafer 1.25mm LED Converter Output
- J8 6PIN Header/2.0mm Panel Power Selection
- J9 30PIN Header 2.0mm Panel Interface
- J10 14PIN Wafer 1.25mm 5 KEY PAD Interface
- J11 6PIN Wafer 1.25mm GPIO Interface
- J12 4PIN Wafer 1.25mm I2C Interface

Ordering Options

AIS-ADVD00ML-001	P/N: AIS-ADVD00ML-001
OSD Key-pad 5-key	P/N: AIS-ADKP005-001
Cable Keypad 5-key 75mm	P/N: AIS-CAK0750-001
IR remote controller	
Backlight driving board	[subject to panel model]
Sensor kit	

Available Resource

- 2D (PDF)
- 3D (SLDPRT)
- Product approval sheet
- Custom engineering: Splash screen, OSD menu, coating, & more...

** Available on request



The QR code above links to the product page on the website



Advanced Input Systems Taiwan

No. 237, 10F-1, Da-Tong Road Section 1, Xi-Zhi District New Taipei City, 22161 Taiwan

Web Site: <http://www.aistaiwan.com>

Tel: +886-2-7729-1391

Fax: +886-2-7729-1392